

# USE AND MAINTENANCE MANUAL



## DRYVER

ED. 01-2015

EN

ORIGINAL  
INSTRUCTIONS  
Doc. 10052644  
Ver. AA



---

The descriptions contained in this document are not binding.  
The company therefore reserves the right to make any modifications at any time to elements, details, or accessory supply, as considered necessary for reasons of improvement or manufacturing/commercial requirements.  
The reproduction, even partial, of the text and drawings contained in this document is prohibited by law.

---

The company reserves the right to make any technical and/or supply modifications. The images are for reference purposes only, and are not binding in terms of design and supply.

---

### **Symbols used in the manual**

---



Operator's manual  
Indicates the need to consult the instruction manual

---



Read operator's manual  
Used to tell the operator to read the manual before using the machine

---



Caution  
Carefully read the sections marked with this symbol and observe the indications, for the safety of the operator and the machine

---



Disposal symbol  
Carefully read the sections marked with this symbol for machine disposal

---



## CONTENTS

|                                     |    |
|-------------------------------------|----|
| WARNINGS .....                      | 6  |
| CAUTIONS .....                      | 6  |
| COMPONENTS .....                    | 8  |
| ON CONSIGNMENT OF THE MACHINE ..... | 9  |
| SERIAL NUMBER PLATE .....           | 9  |
| INTRODUCTORY COMMENT .....          | 9  |
| INTENDED USE .....                  | 9  |
| TECHNICAL DESCRIPTION .....         | 9  |
| OPERATING INSTRUCTIONS.....         | 10 |
| ENVIROMENTAL PROTECTION .....       | 13 |
| WIRING DIAGRAM .....                | 13 |
| EC DECLARATION OF CONFORMITY.....   | 14 |



## WARNINGS



### Important safety instruction

- This appliance can be used by children aged from 8 years and above and persons with reduced physical, sensory or mental capabilities or lack of experience and knowledge if they have been given supervision or instruction concerning use of the appliance in a safe way and understand the hazards involved. Children shall not play with the appliance. Cleaning and user maintenance shall not be made by children without supervision.
- The vacuum must not remain connected to electricity when not in use.
- The machine shall be disconnected from its power by removing the plug from the socket-outlet during cleaning or maintenance and when replacing parts or converting the machine to another function.
- Keep packaging film away from children - risk of suffocation!
- Do not immerse the vacuum in water.
- Do not use any solvents.
- The manufacturer cannot be held responsible for any damage to persons, animals or objects, from the improper or unreasonable use of this vacuum, or from failure to observe the warnings in this booklet or from the failure to carry out the instructions therein.
- Do not use the vacuum with the power cord twisted on the cover head. This equipment can be used in several communities, as an example in lodges, schools, hospitals, factories, stores, offices and in residences.
- If the supply cord is damaged, it must be replaced by the manufacturer or its service agent or a similarly qualified person in order to avoid a hazard.



**WARNING: Operators shall be adequately instructed on the use of these machine**



**WARNING : this machine is not suitable for picking up hazardous dust**



**WARNING This machine is for dry use only**



**CAUTION: This machine is for indoor use only**



**CAUTION: this machine shall be stored indoors only**



**IMPORTANT: DO NOT use the vacuum cleaner without ALL of the filters in place**



**IMPORTANT: the accessories are stored in the dust bag compartment and need to be removed before operating the vacuum cleaner**



**WARNING: Always switch off and unplug the vacuum cleaner from the electrical outlet before assembling, maintenance, or before connecting/disconnecting the attachments**



**IMPORTANT: If the inlet or hose is blocked, switch off the vacuum cleaner and remove blockage(s) before re-starting the vacuum cleaner**



## CAUTIONS



The rules below must be followed carefully to avoid injury to the operator and machine.

### CAUTION!

Before starting, read carefully the instructions manual and follow these safety instructions. The plates of danger and of warning on the machine provide important information for safe operation. Apart from the information in the operating instructions, all the general laws of safety and of the preventions of accidents must be followed.

### ELECTRIC CONNECTION.

The voltage indicated on the rating plate must correspond to the voltage of the electric source.

Never touch the mains plug with wet hands.

Do not run over, crush or pull the power supply cable or extension lead, otherwise it may be damaged. Protect the cable from heat, oil and sharp edges.

If the supply cord is damaged, it must be replaced by the manufacturer or its service agent or a similarly qualified person in order to avoid a hazard. Cleaning equipment must not be made directly with a water hose or a high-pressure (danger of short circuits or other damage)

### APPLICATION.

Before use, check that the unit and operating equipment, in particular, the power supply cable and the extension lead, are in perfect condition and are safe to operate. Do not use the units if it's not in perfect condition.

Never suck up explosive or combustible gases, liquids or dusts, or undiluted acids and solvents! Substances to avoid also include petrol, paint thinner and fuel oil which could form explosive fumes or mixtures by being in turbulence with the air under suction. In addition, the list includes acetone, undiluted acids and solvents, as well as aluminum and magnesium dusts. These substances can also attack the materials used in the unit.

Do not draw in burning or glowing objects. Do not direct the unit at people or animals.

In case of low temperatures, the unit may not be used.



The appropriate safety regulations must be observed when using the unit in dangerous areas (e.g. petrol stations). It is forbidden to operate the unit in potentially explosive locations.

This machine is suitable collective use, such as hotels, schools, hospitals, industries, shops, offices and residences.

#### **OPERATION.**

The operator must use the unit in accordance with the regulations. He/she must take local conditions into consideration and be aware of other people, especially children, when operating the unit.

The unit may only be used by persons who have been instructed in how to use it or who have proved their ability to operate it and who have been expressly commissioned to use it.

The unit may not be operated by children or by the frail and infirm without supervision.

Never leave the unit unattended unless you have switched it off and pulled out the mains power plug.

#### **TRANSPORT.**

Switch off the motor and secure the unit before transporting.

#### **MAINTENANCE.**

Switch off the unit prior to cleaning and maintenance and before replacing components. Pull out the mains plug if the unit is mains operated. Switch off the unit when changing over to another function.

Repairs may only be carried out by authorized customer service centers or by specialists in this field who are familiar with all relevant safety regulations.

#### **ACCESSORIES AND SPARE PARTS.**

Only use accessories and spare parts which have been approved by the manufacturer.

Original accessories and spare parts guarantee that the unit can be operated safely and without any breakdowns..

#### **VACUUM CLEANER.**

This unit must not be used for removing dust or liquids which are hazardous to your health unless specifically indicated on the unit.

Comply with the safety information in the operating instructions!

Do not keep the unit in sub-zero temperatures

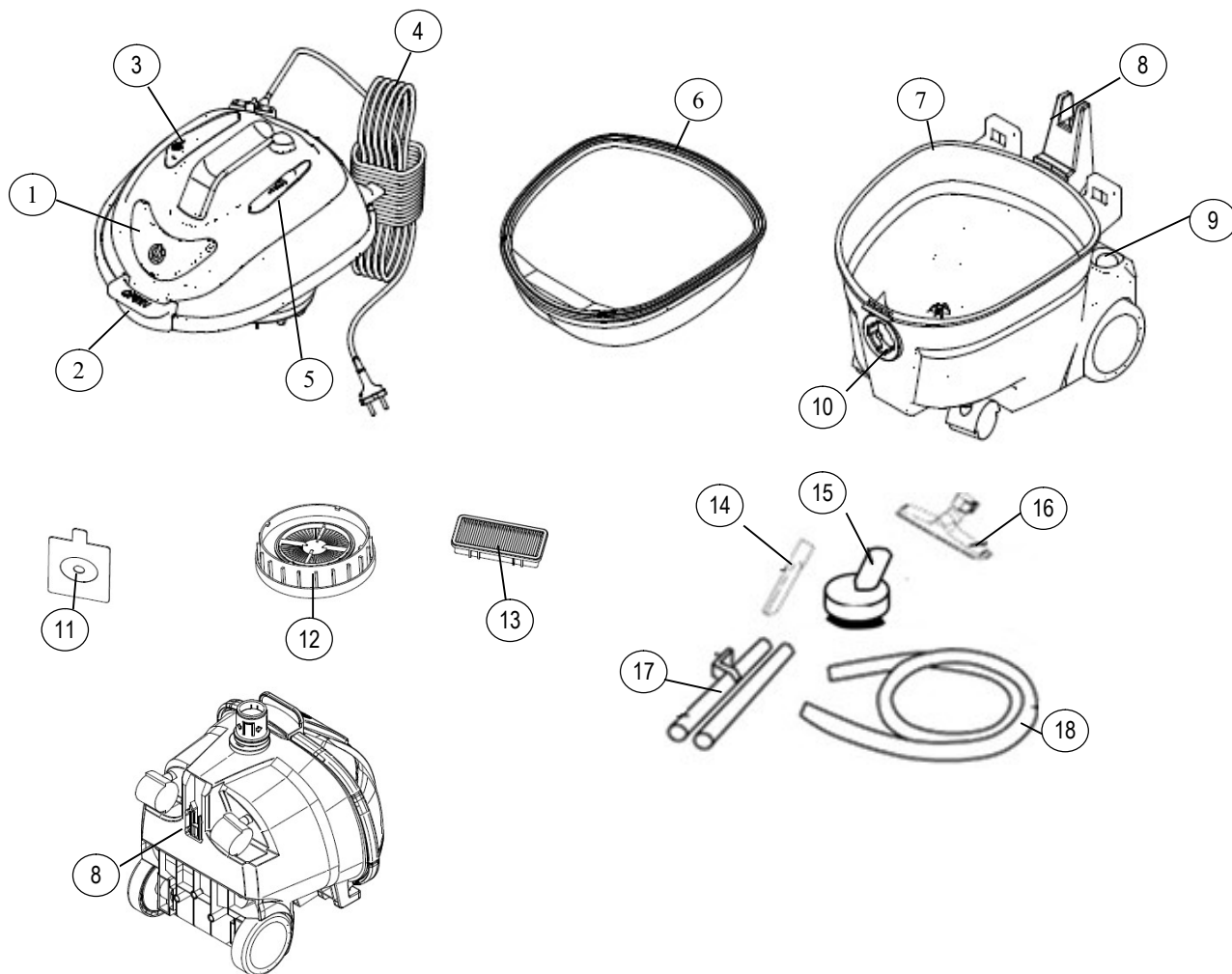
#### **ATTENTION!**

**If the feeder cable is damaged, it must be replaced near an authorized center technical attendance from the constructor or in any case by a professional qualified figure, to preview any risk.**

## COMPONENTS

1. on/off button
2. Opening lever
3. Cord reel button (depends of product configuration)
4. Cord (depends of product configuration)
5. energy saver button (depends of product configuration)
6. sack filter
7. tank
8. Parking function for tube
9. parking holder accessories

10. Suction inlet
11. Paper bag
12. Inlet cartridge filter (optional)
13. Outlet cartridge filter(optional)
14. Crevice
15. combined upholstery and brush
16. Floor nozzle
17. Tubes
18. Flexible Hose



## On consignment of the machine

When the machine is consigned to the customer, an immediate check must be performed to ensure all the material mentioned in the shipping documents has been received, and also to check the machine has not suffered damage during transportation. If this is the case, the carrier must ascertain the extent of the damage at once, informing our customer service office. It is only by prompt action of this type that the missing material can be obtained, and compensation for damage successfully claimed

## Introductory comment

DRYVER is a dry vacuum cleaner.

**The machine must only be used for this purpose.** Even the best machines will only work well if used correctly and kept in good working order. We therefore suggest you read this instruction booklet carefully and read it again whenever difficulties arise while using the machine. If necessary, remember that our customer assistance service (organized in collaboration with our dealers) is always available for advice or direct intervention.

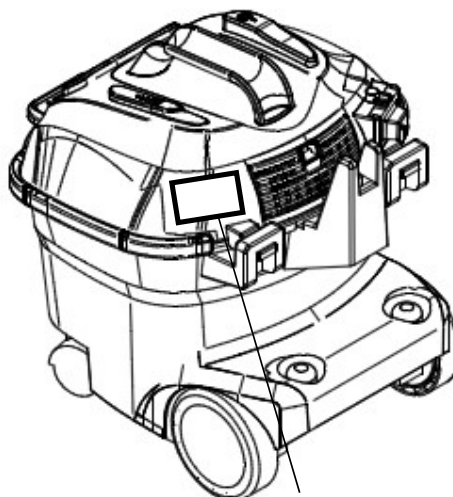
## Intended use



**This machine is intended for commercial use, for example in hotels, schools, hospitals, factories, shops, offices and rental businesses.**

The machine is not suitable for use in the rain, or under water jets. It is **FORBIDDEN** to use the machine for picking up dangerous dusts or inflammable liquids within places with a potentially explosive atmosphere. In addition, it is not suitable as a means of transport for people or objects.

## Serial number plate



|   |  |   |  |
|---|--|---|--|
|   |  | TMB S.r.l.<br>Via Cà Nova Zampieri 5 37057<br>San Giovanni Lupatoto (VR), Italy |  |
| Model: Dryver<br>Type: 10 XX  |  | SAP code: 123456  |  |
| P nom = 1150 W<br>P max = 1300 W<br>V = 220 - 240 V ~<br>f = 50/60 Hz |  | Serial Nr.: 713000001   |  |
| Weight = x,x kg   |  | Prod. 01/13   |  |
|   |  |   |  |

| Technical description | UM   | DRYVER 10C  | DRYVER 10R  | DRYVER 10RE | DRYVER 15C  | DRYVER 15R  | DRYVER 15RE |
|-----------------------|------|-------------|-------------|-------------|-------------|-------------|-------------|
| Voltage               | V    | 220 -240    | 220 -240    | 220 -240    | 220 -240    | 220 -240    | 220 -240    |
| Frequency             | Hz   | 50/60       | 50/60       | 50/60       | 50/60       | 50/60       | 50/60       |
| Power Nom / Max       | W    | 700/800     | 700/800     | 700/800     | 700/800     | 700/800     | 700/800     |
| Vacuum                | mbar | 210         | 210         | 210         | 210         | 210         | 210         |
| Air flow              | l/s  | 36          | 36          | 36          | 36          | 36          | 36          |
| Tank cap. / paper bag | l    | 10 / 5      | 10 / 5      | 10 / 5      | 15 / 10     | 15 / 10     | 15 / 10     |
| Material tank         | -    | PP          | PP          | PP          | PP          | PP          | PP          |
| Cord lenght           | m    | 10          | 10          | 10          | 10          | 10          | 10          |
| Weight                | kg   | 6           | 6           | 6           | 6           | 6           | 6           |
| Sizes (lwxhxh)        | mm   | 415x365x330 | 415x365x330 | 415x365x330 | 415x365x380 | 440x365x698 | 440x365x778 |
| Noise level           | dB   | 61+/- 2     | 61+/- 2     | 61+/- 2     | 61+/- 2     | 61+/- 2     | 61+/- 2     |
| Accessories Diam.     | mm   | 32          | 32          | 32          | 32          | 32          | 32          |

C: cord reel

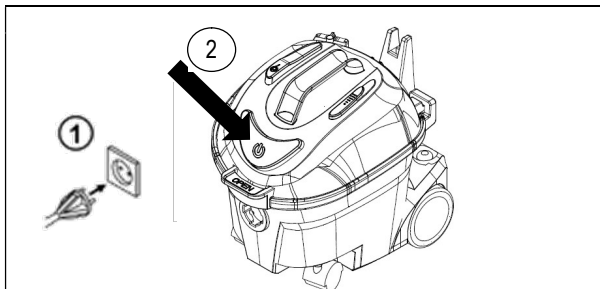
R :replaceable cord

E: Energy saver

## OPERATING INSTRUCTIONS

### 1. ON / OFF

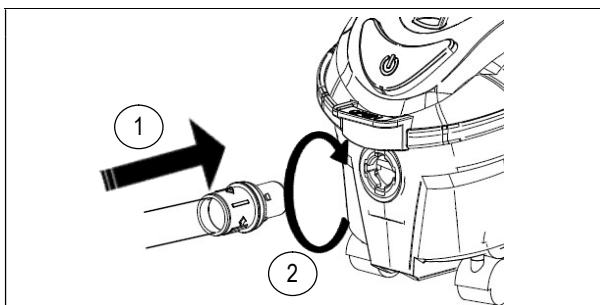
Connect the plug to the power supply and to push the on/off button



### 2. Connection hose to suction inlet

Push the hose inside the suction inlet and turn it in way to lock it in the suction.

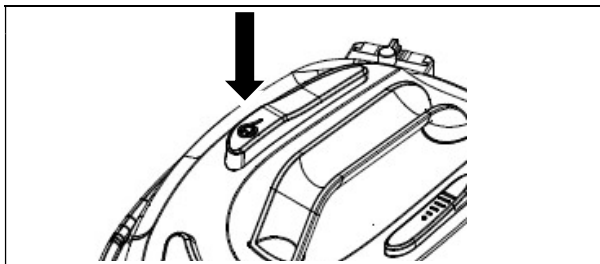
To remove the hose in the same way before turn to unlock and pull it over



### 3. Cord reel

Cord reel is a function present only in the C version of product.

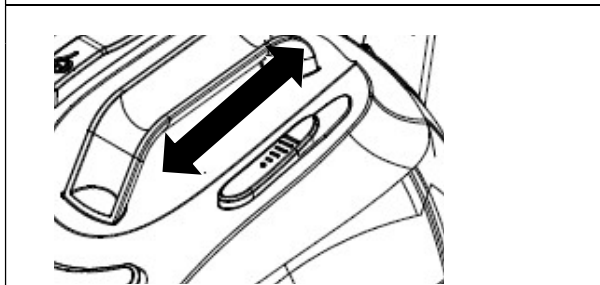
To rewind the cable push the cord reel button:



### 4. Energy saver

Energy saver is a function present only in the E version of product

Sliding the button up and down is possible to adjust the speed of motor and suction





## 5. Placement of cartridge filter

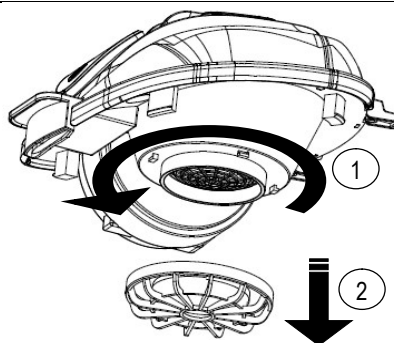
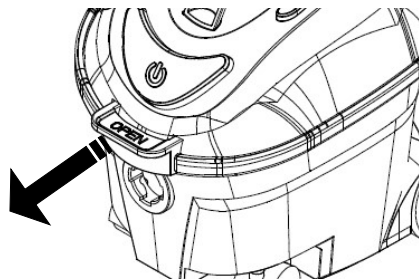
**Before open the units, disconnect vacuum cleaner from power supply.**

Dryver has an optional HEPA filter. Dryver is not a HEPA certified machine and should not be used in cleaning environments where approved sealed HEPA machines need to be used

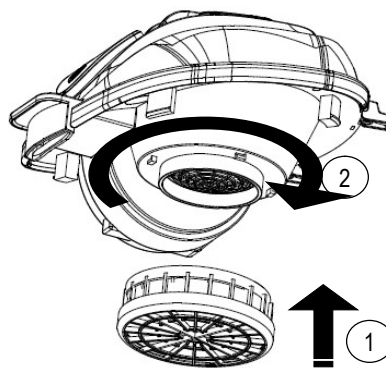
To open the vacuum cleaner pull the handle in the front position and lift the head

Remove the sack filter

Remove protection grid of motor: turn the grid and pull it over

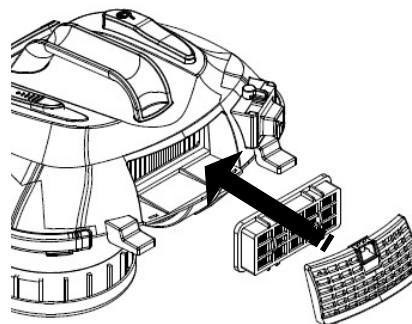


Put in the same position inlet cartridge filter and twist it to lock



To positioning the outlet cartridge filter, open and remove the grid and sponge inside and to insert the cartridge

To clean the cartridge filters and sack filter blowing its with air



## 6. Cord replacement

**Cord replacement is a function present only in the R version of product.**

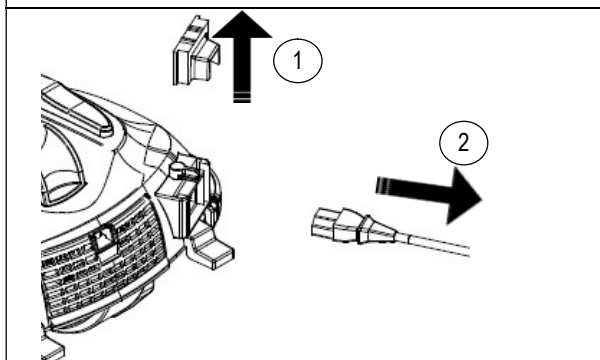
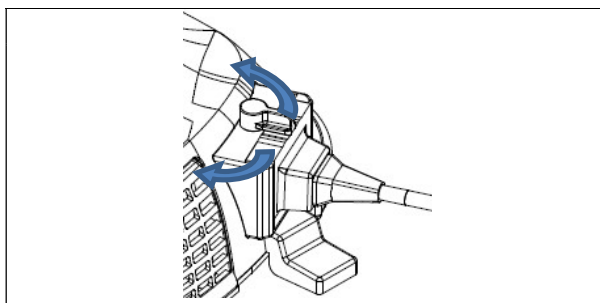
**Before any maintenance disconnect vacuum cleaner from power supply**

Turn the pin to unlock plug holder

This replacement must be made by the manufacturer or its service agent or a similarly qualified person in order to avoid a hazard.

Lift the plug holder and pull out the plug.

Change the cable and lock it using the reverse sequence



## 7. Maintenance, cleaning, repair

**Before any maintenance disconnect vacuum cleaner from power supply**

The units is designed for continuous heavy work. Depending on the number of running hours – the dust filters should be renewed.

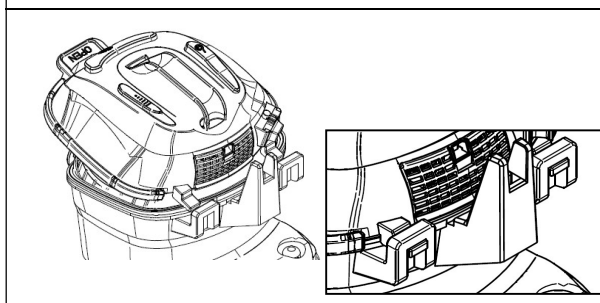
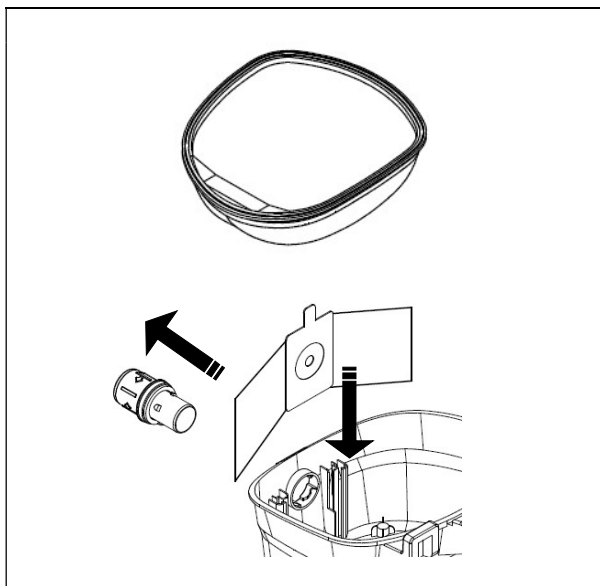
This machine is equipped with a thermal cut-out to protect the motor and other vital machine parts from overheating. Should the machine cut out, you will have to wait at least 10-15 minutes for it to automatically reset. While you are waiting, switch the machine off and unplug it, then check the hose, dust bag and filters to be sure that nothing is blocking the flow of air through the machine.

Sack filter has to cleaned/blowed

Paper bag has to be changed: open the vacuum cleaner as shown in the part 1, remove the hose turning it and pull it over. Replace paper bag filter taking care to fix the new filter sliding it in the ribs inside the tank

To close the vacuum cleaner, tilting a little bit the head of vacuum cleaner, insert before the two pins inside the two holes in the rear position and after to put the head on the tank taking care to the gasket of sack filter.

Push the opening lever to fix the head



Store the machine indoors and in a dry environment  
 Never spray water on the upper section of the vacuum cleaner:  
 Danger for persons, risk or short-circuiting.  
 Clean the machine surface with a dry cloth or a damp cloth with  
 a little cleaning agent.

Order just original spare parts and accessories from local  
 dealer.

For any repairs, contact your local dealer



## ENVIROMENTAL PROTECTION

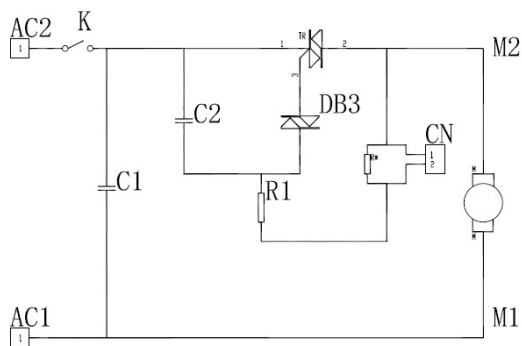
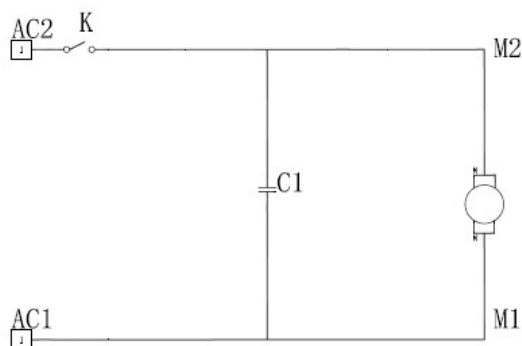


The symbol on the product or on its packing indicates that this product may not be treated as household waste. Instead it shall be handed over to the applicable collection point for the recycling of electrical and electronic equipment. By ensuring this product is disposed of correctly, you will help prevent potential negative consequences for the environment and human health, which could otherwise be caused by inappropriate waste handling of this product. For more detailed information about recycling of this product, please contact your local city office, your household waste disposal service or the shop where you purchased the product.

Old appliances contain valuable materials that can be recycled. Please arrange for the proper recycling of old appliances. Please dispose your old appliances using appropriate collection systems.

Filters and filter bags are made from environment-friendly materials. They can be disposed off through the normal household garbage provided you have not sucked in substances that are not permitted to be thrown into household garbage.

## WIRING DIAGRAM



with Energy Saver



## EC DECLARATION OF CONFORMITY

The undersigned manufacturer:

**TMB s.r.l.**

Via Ca' Nova Zampieri, 5  
37057 San Giovanni Lupatoto (VR)

declares under its sole responsibility that the products

### **DRY VACUUM CLEANER DRYVER**

comply with the requirements of the following Directives:

- 2006/42/EC: Machinery Directive
- 2006/95/EC: Low Voltage Directive
- 2004/108/EC: Electromagnetic Compatibility Directive
- 2011/65/UE (RoHS)
- 2009/125/EC Ecodesign
- 2013/666/EU Ecodesign for vacuum

They also comply with the following standards:

- EN 60335-1: Household and similar electrical appliances - Safety. Part 1: General regulations
- EN 60335-2-69 Household and similar electrical appliances – Safety Part 2: Particular requirements for wet and dry vacuum cleaners, including power brush, for industrial and commercial use
- EN 61000-3-2: Electromagnetic compatibility (EMC) - Part 3-2: Limits – Limits for harmonic current emissions (Equipment with input current  $\leq 16$  A per phase).
- EN 61000-3-3: Electromagnetic compatibility (EMC) - Part 3-3: Limits – Restriction of voltage variations and flicker in low voltage power supply systems for devices with a rated current  $\leq 16$  A.
- EN 55014-1: Electromagnetic compatibility - Regulations for household appliances, electrical devices and similar equipment. Part 1: Emission - Regulation for product family.
- EN 55014-2: Electromagnetic compatibility - Regulations for household appliances, electrical devices and similar equipment. Part 2: Immunity - Regulation for product family.
- EN 62233: Household and similar electrical appliances - Electromagnetic fields Methods for evaluation and measurement

The person authorized to compile the technical file:

Sig. Giancarlo Ruffo  
Via Ca' Nova Zampieri, 5  
37057 San Giovanni Lupatoto (VR) - ITALY

San Giovanni Lupatoto, 04/03/2013

TMB s.r.l.  
Il Legale Rappresentante  
Giancarlo Ruffo

**TMB s.r.l.**

Via Ca' Nova Zampieri  
37057 San Giovanni Lupatoto (VR) Italy

Tel. +39 045 8774299 r.a. - Fax +39 045 8774245 - E-mail: [tmb@tmbvac.it](mailto:tmb@tmbvac.it) - [www.tmbvacuum.com](http://www.tmbvacuum.com)